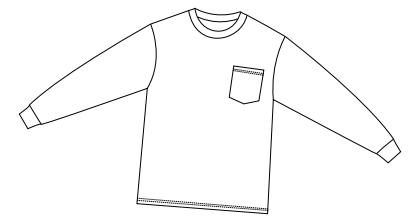
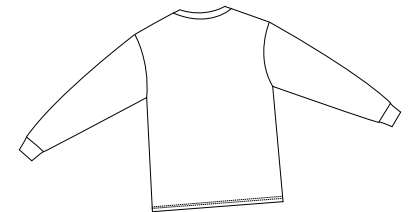


100% Cotton Long Sleeve T-Shirt with Pocket

PORT & COMPANY®



Front



Back

PC61LSP

- * 6.1-ounce 100% cotton
- * Taped shoulder to shoulder
- * Coverseamed neck
- * Double-needle and Bottom hem

Care Instructions:

Machine wash cold, inside out, with like colors. Only non-chlorine bleach when needed. Tumble dry medium. Medium-hot iron. Do not iron decoration.

Finished Measurements in Inches

Size	S	M	L	XL	2XL	3XL	4XL
Neck	6.75	6.75	7.25	7.25	7.75	7.75	7.75
Width	18	20	22	24	26	28	30
Length	27	29	30	31	33	34	35
Sleeve	31.25	33.5	35.5	37.75	40	42.25	44.5
Pocket	5.12x4.5	5.12x4.5	5.12x4.5	5.12x4.5	5.12x4.5	5.12x4.5	5.12x4.5

Neck measured by width, seam to seam. Chest width measured 1" below arm hole. Pocket measured HxW. Body length measured from back neck seam to hem. Sleeve length measured from center back to hem.

Colors

White

Lights

 Lime

Darks

 Black

 Navy

 Orange

Color Chart

Colors	Black	Lime	Navy	Orange	White
PMS	Process Black	367C	296C	172C	No Match

Please Note:

Colors shown are approximate and for reference only. For closest match see PMS colors, or for exact match, returnable samples and grommeted samples are available.